

**Digital Loggers Web Switch Pro
ASCOM Driver
Reference Manual
Version 2.0**

Updated: September 3, 2024

Prepared by: Charlie Miller
chasmiller46@gmail.com
Austin, TX

Table of Contents

Introduction.....2

Configure Your Web Switch.....2

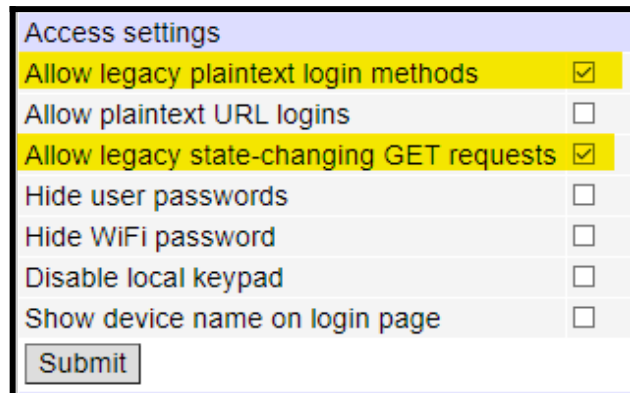
ASCOM Chooser.....3

INTRODUCTION

This ASCOM driver was written to provide a means whereby ASCOM based astronomy software could control the Web Switch Pro sold by Digital Loggers, Inc. There are three version of this ASCOM driver so that an astronomy application can control up to three Web Switch Pros. The ASCOM driver found on the ASCOM web site only allows for control of a single Web Switch Pro.

CONFIGURE YOUR WEB SWITCH

Before attempting to access your web switch for ASCOM setup, it must be configured for the access method the ASCOM driver will use. Using your web browser, connect to your web switch and navigate to the following setup screen:

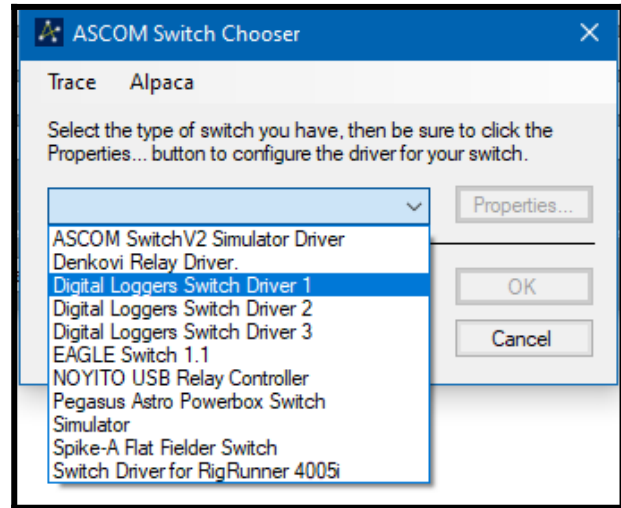


Access settings	
Allow legacy plaintext login methods	<input checked="" type="checkbox"/>
Allow plaintext URL logins	<input type="checkbox"/>
Allow legacy state-changing GET requests	<input checked="" type="checkbox"/>
Hide user passwords	<input type="checkbox"/>
Hide WiFi password	<input type="checkbox"/>
Disable local keypad	<input type="checkbox"/>
Show device name on login page	<input type="checkbox"/>
<input type="button" value="Submit"/>	

Enable the two options highlighted and click **Submit**.

ASCOM CHOOSER

After downloading these drivers, run the Setup program for each one that you want to install. Once installed, go to your astronomy software and add the ASCOM driver you want to use. If you installed all three of the drivers, your ASCOM Chooser program will show the drivers you can select:



Select the one you wish to configure and then click the **Properties** button to display the Setup dialog box.

Enter the IP address of the switch; the user id; and the pass code you previously entered into the switch.

Click the **Connect** button. If the connection is successful, any names you have already entered into the switch will be shown.

If you wish to change any entries, do so and click the **Save Name Changes** button.

When done, click **OK** to save the “Switch Access” information and exit. If you do not click the **Save Name Changes** button, any changes you made will be lost.

